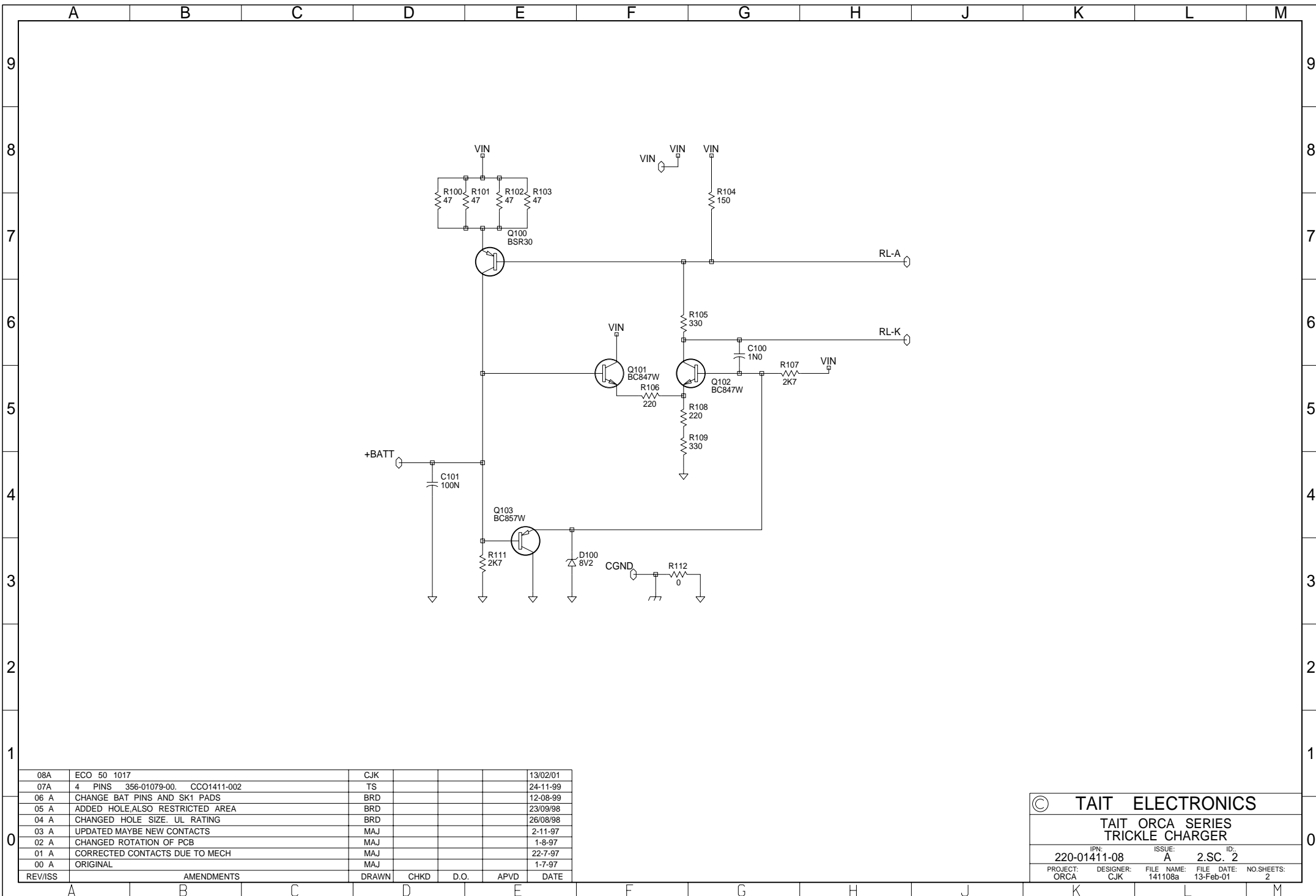


08A	ECO 50 1017	CJK			13/02/01
07A	4 PINS 356-01079-00. CCO1411-002	TS			24-11-99
06 A	CHANGE BAT PINS AND SK1 PADS	BRD			12-08-99
05 A	ADDED HOLE, ALSO RESTRICTED AREA	BRD			23/09/98
04 A	CHANGED HOLE SIZE. UL RATING	BRD			26/08/98
03 A	UPDATED MAYBE NEW CONTACTS	MAJ			2-11-97
02 A	CHANGED ROTATION OF PCB	MAJ			1-8-97
01 A	CORRECTED CONTACTS DUE TO MECH	MAJ			22-7-97
00 A	ORIGINAL	MAJ			1-7-97
REV/ISS	AMENDMENTS	DRAWN	CHKD	D.O.	APVD DATE



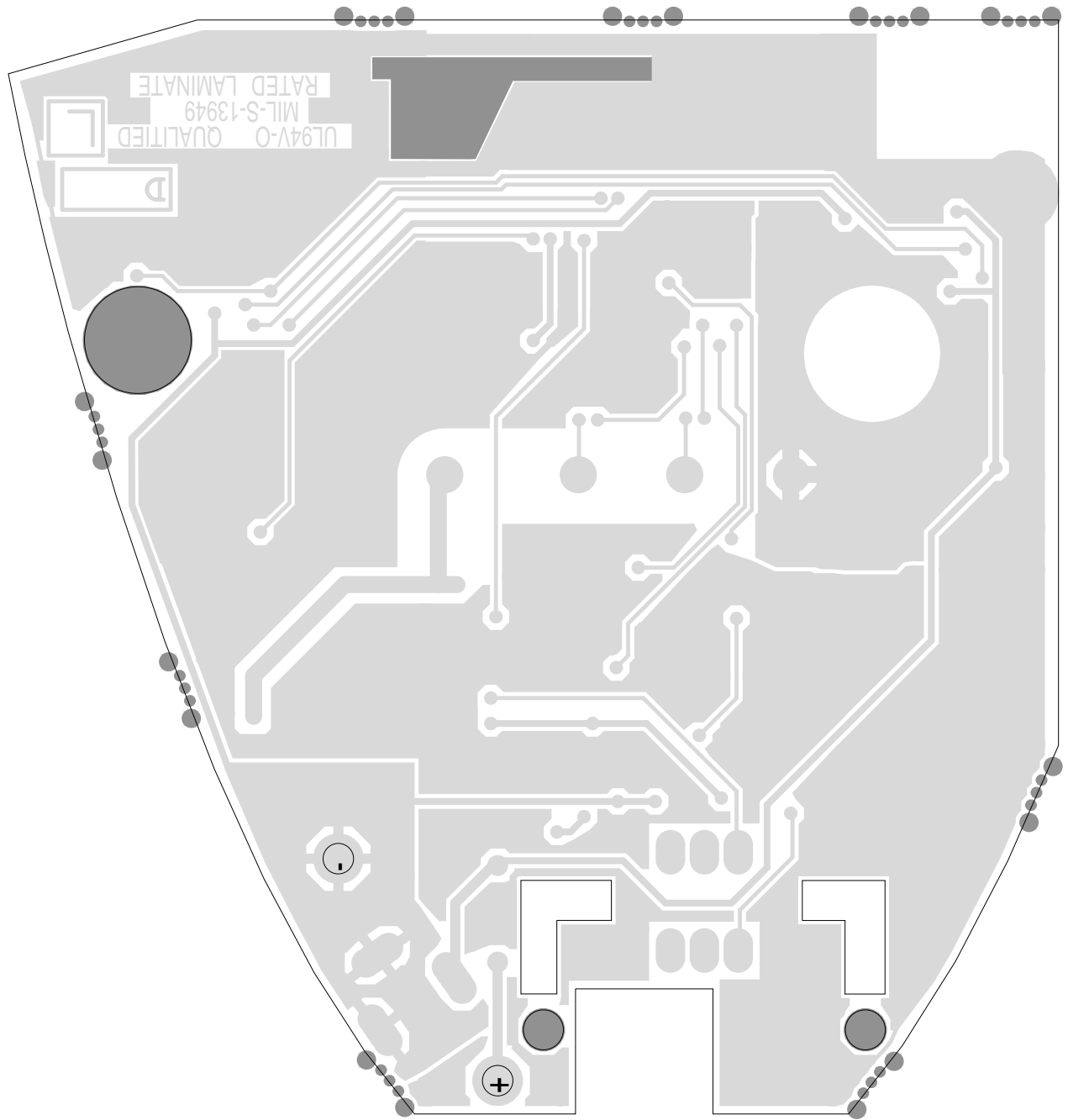
© **TAIT ELECTRONICS**
TAIT ORCA SERIES
FAST CHARGER

IPN: 220-01411-08	ISSUE: A	ID: 2.S.C. 1
PROJECT: ORCA	DESIGNER: CJK	FILE NAME: 141108a
	FILE DATE: 13-Feb-01	NO. SHEETS: 2



08A	ECO 50 1017	CJK				13/02/01
07A	4 PINS 356-01079-00. CCO1411-002	TS				24-11-99
06 A	CHANGE BAT PINS AND SK1 PADS	BRD				12-08-99
05 A	ADDED HOLE,ALSO RESTRICTED AREA	BRD				23/09/98
04 A	CHANGED HOLE SIZE. UL RATING	BRD				26/08/98
03 A	UPDATED MAYBE NEW CONTACTS	MAJ				2-11-97
02 A	CHANGED ROTATION OF PCB	MAJ				1-8-97
01 A	CORRECTED CONTACTS DUE TO MECH	MAJ				22-7-97
00 A	ORIGINAL	MAJ				1-7-97
REV/ISS	AMENDMENTS	DRAWN	CHKD	D.O.	APVD	DATE

© TAIT ELECTRONICS			
TAIT ORCA SERIES TRICKLE CHARGER			
IPN:	ISSUE:	ID:	
220-01411-08	A	2.SC. 2	
PROJECT: ORCA	DESIGNER: CJK	FILE NAME: 141108a	FILE DATE: 13-Feb-01
			NO.SHEETS: 2



TAIT ELECTRONICS	IPN:	ISS:	ID:	DATE:
	220-01411-08	A	2.BA	12 Feb 2001
CHARGER PCB LAYOUT - BOTTOM SIDE				

Scale: 2.1:1 ; Rotation: 90 degrees